

# Woodlawn Post 16

## Group A

### Autumn A Curriculum Newsletter



#### PSD

This term students will learn about Managing their own money as part of their PSD ASDAN qualification. Students will produce a personal budget plan looking at their income and expenditure. They will learn what products different financial organisations have to offer looking at loans, savings and current accounts. During our life skill sessions we will start the unit Food Safety around the Home and Community which will include learning about food safety and personal hygiene as well as practical sessions.

#### Community Learning

This half term the group will be travelling in the local area, we will initially walk to build up confidence in knowledge of the key routes. We will then be accessing a range of public transport. Some of the places we will be visiting this half term are Tynemouth, North Shields, Whitley Bay and Northumberland Park. Students will be encouraged to buy their own lunch to encourage independence and communication skills.

#### GCSE Science

Pupils will develop their knowledge of types of and forms of energy before furthering their understanding of how energy is stored and changed. They will further their knowledge of energy resources both renewable and non-renewable and how energy can be conserved.

#### GCSE Literacy

We begin preparation for the forthcoming GCSE English Language examination. We will be concentrating on the section A of the two exam papers which involves the reading of small fiction extracts. This is to enable pupils to develop their comprehension and questioning skills.

#### ICT Functional skills

This half term students will learn how to manage information storage and how to work safely and securely. They will learn how to conduct effective searches and learn about copyright. We will then move on to learning how to structure and present data in a table.

#### ASDAN Short Course (Expressive Arts)

Students will learn and demonstrate techniques in different forms of expressive arts (eg visual arts, performing arts, music, crafts, writing). Students will develop an awareness of how creative expression and enjoyment of the Arts can have a positive impact on mental health and wellbeing. Students will develop their own creative voice and produce their own original work. They will gain an understanding of the importance of arts and creativity in society and industry.

#### GCSE Art

Several students in the group will continue working towards their GCSE Art qualification. Students will complete a larger scale final piece before moving onto a new project of their choice.

#### GCSE Maths

After an initial set of diagnostic exercises, we will look at data collection and presentation, including averages, scatter graphs, and correlation. This will lead into probability, from simple single and multiple events through to more challenging tree diagram analysis.

#### Sport in the Community

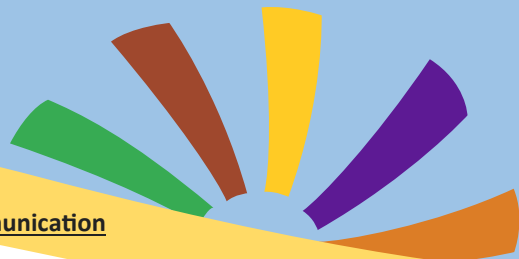
This half term pupils will improve their fitness and stamina by walking in the local area. We will then visit a local Leisure centre where students get introduced to using the Gym. They will have an individualised plan and be encouraged to access this on a weekly basis.



# Woodlawn Post 16

## Group B

### Autumn A Curriculum Newsletter



#### PSD

Following an accredited ASDAN PSD the pupils will learn about the topic Healthy Living. We will explore a range of activities that contribute to a healthy lifestyle they will develop their knowledge of their own lifestyle and the improvements they can make.

#### Community Learning

This half term the group will be travelling in the local area, we will initially walk to build up our confidence in going out. We will visit local shops and cafes to enable students to purchase lunch or a snack if the wish.

#### Sport in the Community

This half term pupils will have choose from 5 different routes in the local area. We will use this time to build up confidence whilst out so they can plan further opportunities using local leisure centres.

#### ICT

In ICT we will be looking at how we information technology our lives. How IT benefits us all at home as well as in society such as shops, libraries and hospitals. We will also discuss how to use it responsibly and make smart choices whilst using it.

#### Creative Arts

This half term students will learn about Art and Crafts from around the world. Students will explore a range of media and techniques and create their own artwork.

#### Literacy/ Communication

In literacy we are looking at the reading techniques for our functional skills exams at the end of the year. We will look at a range of texts such as e-mails , stories, adverts and newspaper articles .

We will also be looking at practical literacy skills such as communication when we are out in the community. We will develop our social communication skills whilst out in the community and how we adapt our conversation for a variety of situations.

#### Numeracy

In numeracy this term we will be looking at exam techniques that will help us with our end of year functional skills exams. We will look at numbers, place value, measure, order and develop our knowledge of numeracy symbols.

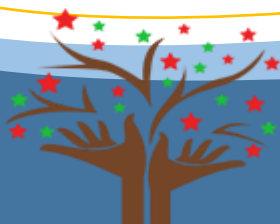
We will also be developing our practical numeracy skills during community learning and independent living making shopping lists, handling money and measurements of the ingredients whilst in the supermarket.

#### Enterprise

We are very excited to be opening the B Stars Café again. At first we will just be open to students but hopefully we can open to parents very soon. Students will all get a chance to try the different jobs involved in running a café such as cooking , waiting on tables, washing dishes, making drinks collecting payments and develop employability skills that will help them in the future .

#### Living independently

In independent living this term we will focus on preparation for the cafe. We will write shopping lists, look at costings then visit the supermarket to buy the shopping we need to make all the food. We will then prepare toasties, make cupcakes and set up the café ready for a Friday morning.



Woodlawn  
School