



Creating opportunity, sharing success



Photograph taken by one of our pupils.

Post 16 2023/24

Teaching staff:

Andrew Chipchase

Claire James

Charlotte Keating

Heike Hawel

Support staff:

Vanya Kerr

Clare Woodley

Duncan Wild

Laura Dodds

Joanne Brown

Eve Reid

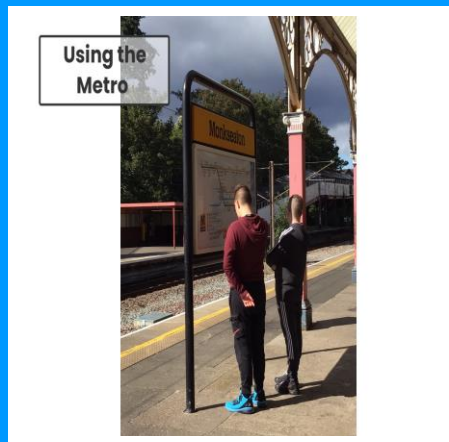
Deputy Head Teacher – SLT link for Post 16

Nichola Aldcroft

Woodlawn School Post 16 Progression booklet



This booklet, together with help from your parents/carers, tutors, teachers, and Connexions Advisers should help you to make informed choices which are appropriate for you as an individual and also allow sufficient flexibility to cope with any changes of direction that you might have in the future.



Future employers, college and university admissions officers will want to see that you have a range of skills and knowledge. They will also want to be sure that you can communicate effectively in discussion and on paper, solve problems logically, manipulate numbers, use information technology efficiently and involve yourself in activities. Achieving your potential at Key Stage 5 is important evidence that they will use to make judgments about you.

You will study a range of subjects. Some you can choose to do, others are compulsory. Choosing the right subjects and getting the right qualifications will give you a better chance of getting the career of your choice. It is important to think about your subject options carefully to ensure you have the qualifications you need when you finish at Woodlawn.



What do we offer ?

Flexible approach to learning.

GCSE Math's, English, Science, Art,
Photography and Computer
Science.

Small teaching groups.

Independent travel training

Community Based Learning.

Work Experience

Functional skills.

Personal and Social development

Independent living skills.

Individualised support.

Duke of Edinburgh

Creative curriculum opportunities.

Routes & Careers

Routes

There are many different routes for you to choose to follow. If you are unclear about which route is right for you or you have already chosen a career path but don't know your choices or who will help you get there, then there are a number of resources that you can use to seek advice and guidance.

Connexions is a service for young people providing impartial information, advice, guidance, and support, on a wide range of opportunities and issues.

Connexions works in partnership with a wide range of organisations which support young people. These include housing, benefits, personal finance, health, community activities and volunteering opportunities.

Every young person living and learning in North Tyneside has a named Connexions Personal Adviser, to provide impartial information advice and guidance to help your child explore their aspirations and career planning. For Woodlawn this is Jill Anderson, you can talk to her about a range of topics including:

Career Planning

- Advice on college, university and other possible further education routes
- Applications to employment and training
- CV and interview technique
- Financial Support for Learning, including grants and bursaries
- Personal development opportunities including social activities and volunteering
- Referrals to placement projects such as Helping Hands.

My role is to offer impartial information, advice and guidance about future options and to support young people in making a successful transition

Connexions service

from school to their next placement. I attend the person centred review in years 12 and 13, work closely with students and staff at Woodlawn and liaise with staff at local colleges and education providers to ensure appropriate options are considered for each student. Students are supported to make their decisions by one to one guidance interviews and the completion of an action plan, the opportunity to meet staff from prospective colleges/education providers, by visiting colleges and, if appropriate, taking part in taster days.

I can be contacted on 6434178 or by email at Jill.anderson@northtyneside.gov.uk I am happy to meet parents/carers in school, at an outreach centre and can also make home visits.

Careers & Pathways advice

The following websites provide a range of information that will help you look at jobs, what they involve, skills needed, entry requirements, qualifications, training and wages:

www.connexions-tw.co.uk/northtyneside - The Connexions North Tyneside Website
www.learndirect.co.uk

Jobs, Apprenticeships & Other Training:

www.apprenticeships.org.uk
jobseekers.direct.gov.uk www.gov.uk/1619-bursary-fund

Job Preparation

www.cv-service.org/cv-samples-templates.htm
www.mycvbuilder.com

Further & Higher Education

www.tynemet.ac.uk/ - Tyne Met College
www.ncl-coll.ac.uk/ - Newcastle College
www.ucas.co.uk
www.aimhigher.ac.uk
www.prospects.ac.uk
<https://careers.nuth.nhs.uk/your-career/project-choice>

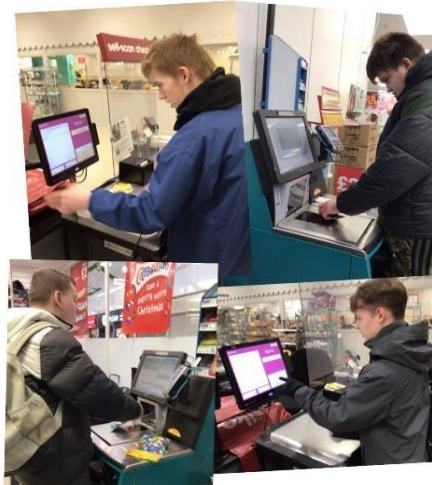
ALL ABOUT COURSES:

Every student will have the opportunity of taking courses that will lead to qualifications. We offer different pathways to our students' dependent on their individual need.

During the time spent in Post 16 all pupils will undertake a variety of enrichment activities such as community based learning, independent travel, community sport (gym or swim), work experience, social events and volunteering projects linked to Duke of Edinburgh Bronze.

Post 16 Enrichment

Pupils are given additional work based learning opportunities to prepare them for the world of work.



Level

Step up to English Silver

Level 1 (GCSE D – G)

GCSE English Literature

GCSE English Language

ASDAN communication.

A - Z of Subjects



Course outline - Entry level

Is designed to equip learners with the basic skills they need to operate confidently, effectively and independently in education, work and everyday life.

Course outline - Level 1 & 2

Is designed to equip learners with skills such as comparing the ideas and presentation of texts, writing for a specified audience and purpose, and communicating and adapting language. They're assessed in three units (Speaking, Listening and Communication; Reading; and Writing)

A - Z of Subjects

English (Communication)

Level

Pre-Entry level

Exam Board

Asdan

Assessment

Class based

Small classroom based activities developing basic life skills in terms of communication.

A number of activities will involve going off site to visit places like supermarkets, libraries, cafes, etc to develop those essential communication skills



Maths

Level

Entry level (pre GCSE) – Entry 1, 2 or 3

Level 1 (GCSE D – G)

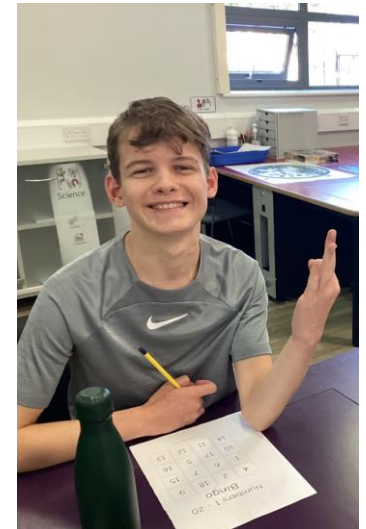
GCSE Maths

Course outline - Entry level

Is designed to equip learners with the basic skills they need to operate confidently, effectively and independently in education, work and everyday life. Tests are available on demand, and are internally marked and externally verified.

Course outline - Level 1 & 2

Are designed to develop the learner's ability to represent situations using mathematics, analyse calculations, solve problems and interpret mathematics to explain situations.



A – Z of Subjects

ICT

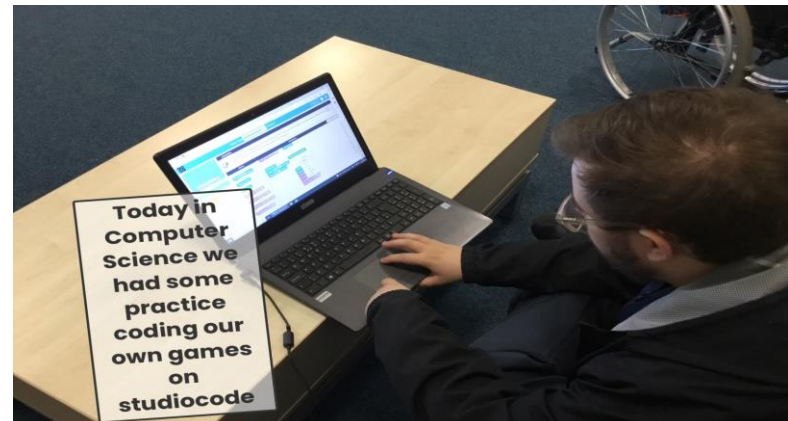
Level

Entry level – 1, 2 & 3
Level 1 (GCSE D – G)
Level 2 (GCSE A* - C)
GCSE Computer Science.



Course Outline

The Edexcel Functional Skills qualification in Information and Communication Technology (ICT) at any level is suitable for young people who wish to be recognised for their achievement of a wide range of practical ICT skills for use in everyday life. The qualification is also suitable for those preparing to progress to further qualifications.



A - Z of Subjects

Level:

Entry level or
Level 1 or 2

Exam Board

ASDAN

Assessment

Portfolio of evidence

Personal and Social Development(PSD)

Course Outline

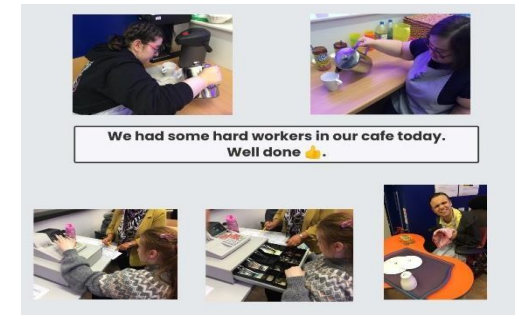
The Personal and Social Development is a nationally recognised qualification of the ASDAN programmes. The qualification offers imaginative ways of accrediting young people's activities and enables the pupils to be part of rewarding and valuable learning experiences. It promotes and allows centres to record a wide range of personal qualities, abilities and achievements of young people, as well as introducing them to new activities and challenges.



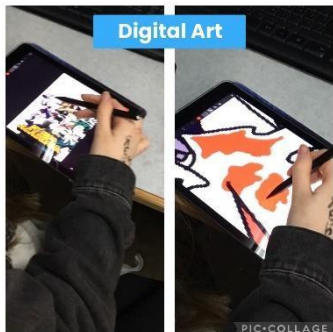
A - Z of Subjects

Other Opportunities

During the time spent in Post 16 all of our learners will be given the opportunity for a work experience placement at least once per year.



A creative curriculum will be offered for half a day per week using off site facilities.



Finally, pupils have the opportunity to complete various ASDAN short course accreditation in subjects Animal Care, Expressive Arts, Sport, Road Wise, Enterprise History, Geography, Science and Independent living.



Woodlawn Post 16



Hartington Road, Cullercoats NE30 3RZ

Telephone: 0191 643 2585

Fax: 0191 643 2587

Email: Nichola.Aldcroft@ntlp.org.uk

Head Teacher: Mrs Gill Wilson